

# LVWC Student and Tutor News



LVWC location  
7 Elm Street, Westerly

## *Literacy Volunteers of Washington County*

7 Elm Street  
P.O. Box 245  
Westerly, RI 02891

401-596-9411

[www.literacywashingtoncounty.org](http://www.literacywashingtoncounty.org)

Join us!



## Welcome Back!

Literacy Volunteers of Washington County opened Monday, September 13. We are temporarily located in the St. Stephen Room at Christ Church while construction is taking place in and around our offices. We hope to be back in our usual office space in a couple of months. We will keep you posted.



## Student and Tutor Certificates

Your 2021 certificate is ready and waiting for you.  
Come by our office to pick up yours.

If you prefer us to mail yours, let us know.



## How to find us



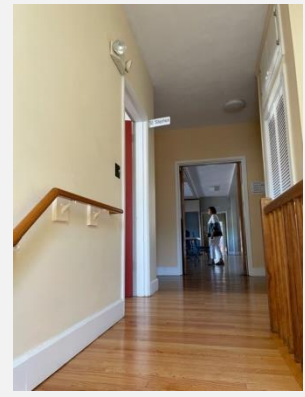
Coming from the parking lot, take a right as you enter the hallway and enter through the glass door.



Walk down the hallway to the red doors labeled "Parish Hall."



Go up the stairs.



At the top of the stairs, our office is located in the St. Stephen Room. Our classroom is located in the parish hall.

## Handicapped parking is available



Handicapped parking is accessible via Elm Street. You will need to display a handicapped placard. Once parked, enter through the large wooden doors. You will find us at the other end of the hall.

Please park in the Christ Church parking lot in the back of the Town Hall if you do not need handicapped parking.



We are here to help!  
Barbara and Theresa  
LVWC Literacy Specialists

## Tutor Tips

Welcome to Tutor Tips Fall, 2021 edition! This column aims to refresh your tutoring tool kit with practical information and suggestions for best practices. In later newsletters, we'll discuss the environment and experience we try to create for successful learning. This time, let's revisit some adult learner characteristics that have implications for your tutoring.

LVWC is committed to helping ADULTS improve their English language skills. We define adults as people over age 18 who have adult responsibilities like jobs, family roles and obligations, etc. Regardless of their background or culture, most tend to be self-directed and want a say in what and how they learn. They find their way to LVWC to become more fluent in communicating in English so they

can improve their working and personal lives in the United States.

Because you are an adult (right?), you probably share some characteristics with your adult students and can relate to them. They are practical and so are you. They want to learn relevant information and strategies that they can apply immediately to their real life situations.

Like you, your student has had many life experiences and has developed attitudes based on these experiences. This suggests that, unlike when teaching children, we can build on these life experiences, acknowledging them as valuable resources. As discussed in the spring newsletter, we can hook new learning onto established memories and spark more connections in their brains. We use repetition and meaningful material in visual and verbal forms because that's what paves those paths to long term memory.

Part of this past experience and memory is, of course, attitudinal. We remember events, but also how we felt experiencing them. Perhaps "school," or parts if it, was not a positive experience, or we didn't have much of it. You may remember feeling anxious going into unfamiliar situations. This is why we downplay aspects of formal education, and our approach is student-centered.

You don't want to be treated like a child and neither does your student. We have materials appropriate for adult learners available, in print and online. You may have noticed many of the wonderful resources that Theresa has put under the "learning resources" tab on the LVWC website: <http://literacywashingtoncounty.org>. These address many aspects and levels of language learning so you don't have to reinvent the wheel. We are constantly tweaking and updating materials. Take a look if you haven't already. Or suggest others you have found.

### Tutor Gatherings Coming Up 2021-2022

**September 27, 2021 at LVWC**

**October 25, 2021 (TBA)**

**November 29, 2021 at LVWC**

**11:30am-12:30pm**

**See you there IN PERSON! 😊**

[www.literacywashingtoncounty.org/tutors](http://www.literacywashingtoncounty.org/tutors)

## Tutor Tips continued...

Student-centered means, instead of a one-size-fits-all curriculum, we focus on the student's goals and tailor our sessions to meet these, often hard-to-define-and-confine goals. It means exploring their preferred learning styles. It means listening actively and patiently, and pausing often to make sure they understand.

Collaboration implies that you and your student are both working hard together toward a common goal. Respect for each other is implicit. As you know, language learning is a lengthy, non-linear process. Although peppered with healthy mistakes and laughter, thank goodness, it can't be delegated. It requires the mutual involvement and effort of tutor and student.

Here's to a year filled with successful, student-centered, collaborative learning. We're here to support you. As you discover how unique your student is, maybe you'll also find out how much you have in common.

Barbara 😊

### Congratulations to Yamila Garcia, Recipient of the 2021 Bob Richins Scholarship Award!



Yamila N. Garcia is the 2021 Bob Richins Scholarship Award winner. She received a check for \$1,000 toward her tuition at the University of Connecticut, where she is continuing her studies in computer science. Yamila has been attending the Mystic conversation class for two years, working with Kathy Busse and fellow student Manar Alakad on English language skills. Left to right: Kathy Busse, Manar Alakad, Yamila N. Garcia, and Mary Carol Kendzia, director of LVWC.

# Free Conversation Classes

*Keep those conversation skills sharp*

Visit our website for more information.

[www.literacywashingtoncounty.org/students](http://www.literacywashingtoncounty.org/students)



## Graduate Village/URI Online Conversation Class

When: Monday evenings, 5:30-7:00pm

Where: Zoom

Meeting ID: 897 6923 9961 Passcode: 817631

This class is hoping to go in-person soon. Check our website for updates.



## LVWC Tuesday Conversation Class In-Person Only

When: Tuesdays, 11:00am-12:00pm

Where: LVWV location (Christ Church)



## LVWC Wednesdays Conversation Class Zoom Only

When: Wednesdays from 11:00am-12:00pm

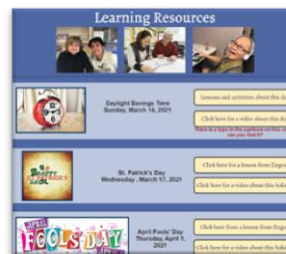
Where: Zoom

Meeting ID 834 5600 8651 (no passcode)

Don't forget to visit our website's Learning Resources page and our Student page for the latest information!

[www.literacywashingtoncounty.org/learning-resources](http://www.literacywashingtoncounty.org/learning-resources)

[www.literacywashingtoncounty.org/student](http://www.literacywashingtoncounty.org/student)



## Literacy Specialist Contact Information

Barbara Heuer  
Monday-Tuesday  
9:30am-12:30pm  
[lvwcbhstaff@gmail.com](mailto:lvwcbhstaff@gmail.com)

Theresa Gregal  
Monday-Thursday  
9:00am-1:00pm  
[lvwctgstaff@gmail.com](mailto:lvwctgstaff@gmail.com)

401-596-9411

Executive Director  
Mary Carol Kendzia